

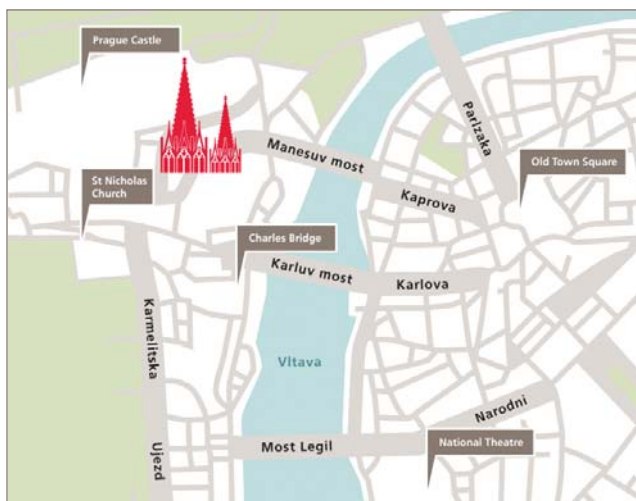


# HOTEL FACT SHEET



THE ROCCO FORTE COLLECTION

## LOCATION



Centrally located in the heart of Prague between Prague Castle and The Charles Bridge, in the picturesque Malá Strana district, The Augustine is the quintessence of Prague's history, character and beauty. Adjacent to the beautiful Wallenstein Garden, the hotel is within easy reach of the city's many colourful tourist attractions, making it a natural choice for business and leisure travellers. The Augustine is also in close proximity to Prague's commercial district; Prague's Ruzyne International Airport is a 30-minute drive away.

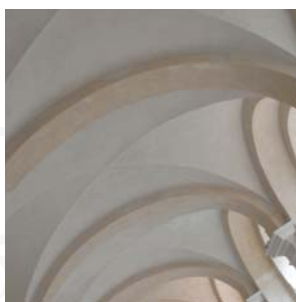
## ACCOMMODATION

The Augustine is created from a complex of seven buildings, many of which have historical significance, including the 13th century Augustinian St. Thomas Monastery after which the hotel is named. All guest rooms offer stunning views of Prague Castle, Malá Strana, St. Thomas church or the tranquil monastery courtyards. The hotel reflects The Augustine's wonderful location, its strong link to the cultural heritage of Prague and its rich monastic history. The decor embodies the art of simple luxury through luxurious, contemporary designs with a distinctly ecclesiastical feel; all bedrooms feature a range of furnishings inspired by 1930's Czech cubism and modern fittings.

## GUEST ROOMS

All of the 101 bedrooms and suites are different, with the majority boasting interesting architectural and structural characteristics from vaulted ceilings and beams to original doors. The upper floors of the original monastery building housed the monks living quarters and in many cases two or three of the 'cells' have been combined to create the new rooms and suites. The bedroom colour schemes include green with purple accents and grey with orange accents, featuring heavy linens and velvets in papal-inspired shades of purple, red and orange.

- Classic Rooms 48
- Executive Rooms 22
- Superior Deluxe Castle-View Rooms 8
- Studio Rooms 7
- Junior Suites 5
- Classic Suites 5
- Deluxe Suite Castle-View Suites 3
- The Tower Suite 1
- The Thomas Suite 1
- The Charles Suite 1



THE ROCCO FORTE COLLECTION

# SERVICES

## AT THE HOTEL

- 24-hour concierge service
- 24-hour in-room dining
- Complimentary shoe shine
- Evening housekeeping service
- Express check-in / check-out
- Instant message delivery
- Limousine service
- Same-day laundry service
- Valet and pressing service
- Valet parking
- Wi-Fi available in public areas

## IN YOUR ROOM

- 100% linen sheets
- 110/240 V converter outlets
- Air-conditioning
- Complimentary newspaper
- Dual-line telephones
- High speed internet access, UK and US modems
- Hypoallergenic pillows, blankets and cotton sheets available upon request

- Marble bathrooms with superior cosmetic amenities and luxury bathrobes and slippers
- Multi-channel flat-screen TV
- Personal safe
- Private minibar
- Writing desk

## IN YOUR SUITE

- CD/DVD players
- Flat-screen TVs, also in the bathroom
- i-Pod docking station
- The exclusive benefits of The Rocco Forte Suite Experience

## FOR CHILDREN

- Babysitting service
- Children's amenities
- Children's menu
- Children's program



THE ROCCO FORTE COLLECTION

# DINING AND RELAXATION

## THE MONASTERY RESTAURANT

Housed in a glass-covered courtyard, The Monastery offers a modern European Brasserie menu in a bright, refreshing space in the heart of historic Prague. Floor-to-ceiling windows overlook a spacious terrace that is popular for summer dining, and three listed trees have been carefully incorporated into the restaurant's design. Highlights of The Monastery's menu include dishes created with the hotel's own St Thomas Beer, accompanied by an international wine list designed to invite diners to discover something new.

## TOM'S BAR

Located in a delightful barrel-vaulted hall, Tom's Bar features high ceilings and outside seating on comfortable lounges in the cloister terrace during summer. Once the monastery refectory, Tom's Bar now offers live music in the evenings and a selection of teas and cocktails - including the bar's signature 'Angel Cocktails' which are inspired by the carefully restored 19th century baroque frescoes.

## THE BREWERY BAR

Once the cellar of the original St Thomas brewery - and a popular meeting place for locals - The Brewery Bar continues this tradition today, serving a modern St Thomas Beer along with a selection of Czech-style tapas and speciality microbrews from across the country. Popular with locals and hotel guests, this atmospheric basement bar features original 17th century stalactites and stalagmites, a floating terracotta floor especially laid to protect and highlight these unique surroundings and an authentic underground water source which was glazed over and incorporated into the bar's design.

## IN-ROOM DINING

The Augustine's guests can enjoy delicious, memorable meals in the comfort and privacy of their room. Whether it is a lazy breakfast in bed, an intimate dinner or a quick midnight meal our restaurant team will cater for your every wish.

Our in-room dining menu also offers a variety of dishes from The Monastery which are created from the choicest local and seasonal products. Please advise our in-room dining team of any special wishes or dietary requests so they can be accommodated by our chefs.



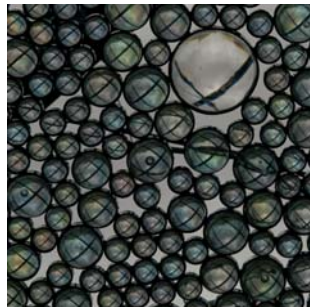
THE ROCCO FORTE COLLECTION

# THE AUGUSTINE SPA

Immerse yourself in the tranquillity of The Augustine Spa, where luxurious treatments are inspired by the simplicity and purity of nature and ancient recipes from the Augustinian order of monks. Our team of therapists are trained to ensure each guest receives a holistic experience for the mind, body and spirit; our treatments feature the best organic products.

## AT THE AUGUSTINE SPA:

- Finnish sauna and steam room
- Four treatment rooms including one double room
- Hammam treatment room
- Two experience showers
- Relaxation area
- 24-hour Technogym fitness centre
- Two manicure stations



THE ROCCO FORTE COLLECTION

# MEETINGS, EVENTS AND WEDDINGS

Rich in history and design, The Augustine provides an extraordinary backdrop for exclusive meetings and incentives. Banquet spaces range from an impressive ballroom with vaulted ceilings to four meeting rooms for more intimate events, family gatherings or private business lunches. The Augustine's several green courtyards are unrivalled venues for elegant coffee breaks, soirees, business mixers and wedding parties. The hotel also has direct access to the neighbouring St. Thomas Church.

To facilitate the planning of your event, the thoughtfully composed banqueting, menus and drinks packages allow you to organise your event easily. A variety of set ups, audio-visual effects and music accompaniment can be accommodated upon request. To create your event or tailor our programmes to your specific needs, please speak to one of our Event Managers.

## MEETING AND EVENTS SPACES

- A majestic 196m<sup>2</sup> Ballroom accommodating up to 200 guests
- 4 meeting rooms with state-of-the-art facilities including 3 boardrooms with natural daylight
- A selection of inner courtyards ideal for summer events

## BUSINESS SERVICES

- 24-hour Business Centre
- Dedicated Group & Event Manager
- Florist and Event Decoration
- Technical assistance
- The latest audio-visual technology in all meeting rooms
- Wi-Fi access in all meeting rooms

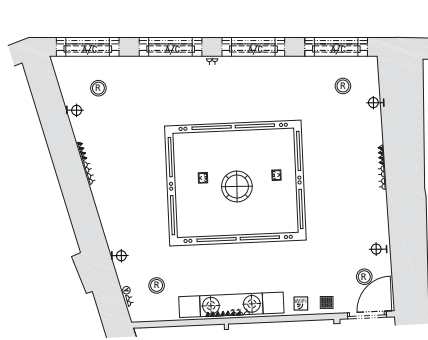


THE ROCCO FORTE COLLECTION

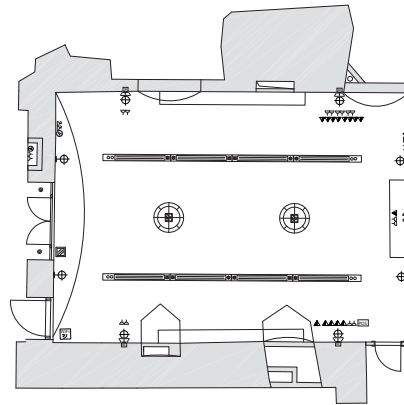
# CAPACITIES AND FLOOR PLANS

## CONFERENCE AND BANQUETING FACILITIES

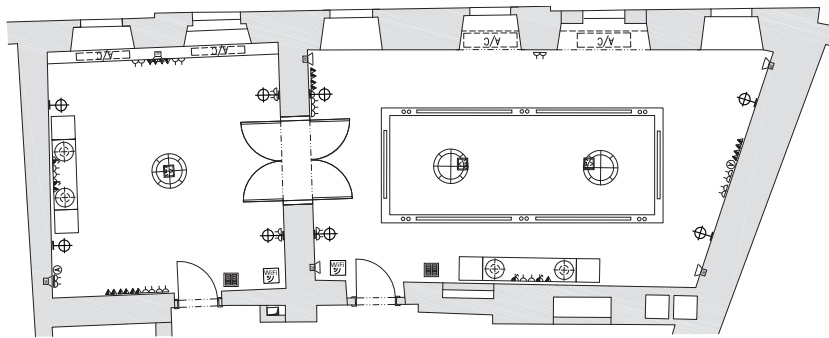
Name	Height m	Size m2/sq ft	Classroom capacity	Theatre capacity	U - shape capacity	Banquet capacity	Reception style capacity	Cabaret style capacity
Salon 1	2,9	46 / 495	20	40	20	32	40	15
Salon 2	3,0	26 / 280	12	18	12	16	20	10
Salon 2+3	3,0	71 / 765	n/a	n/a	n/a	n/a	60	n/a
Salon 3	3,2	45 / 485	24	40	20	32	40	15
Salon 4	4,4	85 / 915	40	60	28	64	90	30
Ballroom	5,6	196 / 2110	105	144	55	130	200	54



Salon 1

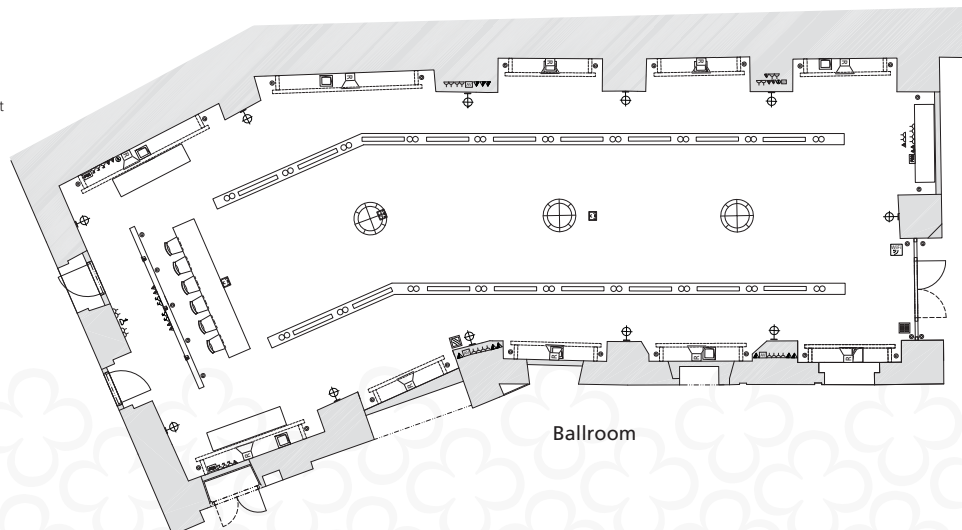


Salon 4









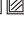



Salon 2

Salon 3



Ballroom

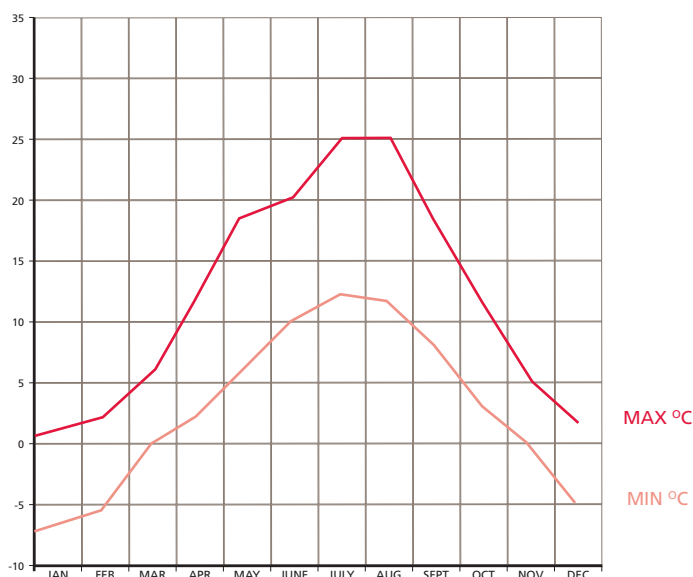
### Key

-  Single 13A Switched Socket Outlet
-  Single 5A Switched Socket Outlet
-  16A Socket Outlet 230/400V
-  TV Socket - Coax
-  AV Input
-  Cat6 Data, Broadband Internet, Phone Socket, IPTV
-  Point of sale
-  Wi-Fi
-  Crestron Loudspeaker
-  Crestron Panel



# USEFUL INFORMATION

## CLIMATE



## TRANSFERS

### *By Air*

Prague Ruzyně International Airport is between 20 and 40 minutes from the hotel by car, depending on the traffic conditions. Prague Airport services regular flights to all major cities around the world.

### *By Train*

The main railway station is a 15 minute taxi ride from the hotel.

### *By Car*

From the Prague Ruzyně International Airport follow motorway 7 towards Karlovy Vary. Take Exit 26 and continue along Motorway 6 towards Prague centre. After 4 km, continue along Belohorská to Jelení. Continue along Mariánské Hradby passing by Prague Castle on the right-hand side. Turn right to Chotkova and take the first right into Valdštejnská. At the end of the street turn left; The Augustine is 15 metres along the road on your left-hand side. Valet parking is available.



THE ROCCO FORTE COLLECTION

## PRAGUE CASTLE

Founded in the ninth century by Premyslid Prince Borivoj, Prague Castle became the seat of Bohemian rulers from the eleventh to the seventeenth century. The Castle has been rebuilt and extended many times and is a vast complex including a cathedral, royal palace, churches, monastery and galleries. Central to the Czech nation, it is the seat of the president, whilst St. Vitus Cathedral (in the third courtyard) is the religious heart of the whole country.

## THE CHARLES BRIDGE

Construction on The Charles Bridge commenced in 1357 under King Charles IV and finished in the beginning of 15th century. Once the only means of crossing the river Vltava, The Charles Bridge was once the most important connection between the Old Town and the Prague Castle. Decorated by a continuous alley of 30 statues and statuaries, most of them baroque-style, The Charles Bridge offers a pleasant view of the Old Town to the east, and a magical view against Prague Castle at night when the castle is floodlit.

## ST. THOMAS CHURCH

An original Gothic church founded for the Order of Augustinian Hermits by Wenceslas II in 1285, St. Thomas Church was completed in 1379 along with an Augustinian Monastery and St. Thomas Brewery. Between 1723 and 1731, the church was remodelled into its current baroque form by famed architect K.I. Dientzenhofer. Today, St Thomas Church is still very much a part of the local community with services in Czech, English and Spanish.

## OLD TOWN SQUARE

The heart of medieval Prague, the Old Town Square originates from the twelfth century and has witnessed many of the city's momentous events. The Orloj (Astronomical Clock) on the wall of the Old Town Hall dates from the early fifteenth century and chimes on the hour when a procession of wooden apostle statues emerges from a door on one side to enact a medieval morality scene before disappearing behind a door on the opposite side.

There is so much more to see and do in the 'City of 100 spires'.  
Please contact us for suggestions of more to discover in Prague.



THE ROCCO FORTE COLLECTION

# FOR FURTHER INFORMATION ABOUT THE AUGUSTINE

Please phone: +420 266 112 233

Or e-mail: [info.augustine@roccofortecollection.com](mailto:info.augustine@roccofortecollection.com)

Or fax: +420 266 112 234

The Augustine

Letenska 12/33

Prague 1 - 118 00

Czech Republic

[www.roccofortecollection.com](http://www.roccofortecollection.com)



## THE ROCCO FORTE COLLECTION - THE ART OF SIMPLE LUXURY:

Berlin - Hotel de Rome, Brussels - Hotel Amigo, Edinburgh - The Balmoral,  
Florence - Hotel Savoy, Frankfurt - Villa Kennedy, Geneva - Le Richemond,  
London - Brown's Hotel, Manchester - The Lowry Hotel, Munich - The Charles Hotel,  
Prague - The Augustine, Rome - Hotel de Russie, Sicily - Verdura Golf & Spa Resort,  
St Petersburg - Hotel Astoria

Future Openings: Abu Dhabi (2011) - Jeddah (2012)  
The Shepheard, Cairo (2013) - Assoufid, Marrakech (2013)